

SWADOH

NEW ORLEANS | PARIS



SWADOH is a creative studio seeking a harmonious blending of artistic expression and a high level of craftsmanship.

We dedicate our effort to bring together these two elements to create works of art that are not only aesthetically pleasing but also demonstrate a mastery of technique and skill. The current collection features lighting, art and materials handcrafted by the finest French artisans. Each collection emerges from the unique connections between creators and their chosen mediums and is fueled by the belief that thoughtful design elevates spaces.

# About the Founder



SWADOH founder and creative director Valerie Legras, a native of Epernay, France, has made New Orleans, Louisiana home for the last decade.

The idea for SWADOH was sparked by a desire to cultivate a community of creators who embody the city's creative spirit and deep-rooted fine craft culture. With New Orleans as a base, SWADOH invites a direct line of inspiration and communication with creators in Legras' native France who share an appreciation for the finest craft traditions.

*"Light correlates to shadow by contrast.  
One does not exist without the other."*

# Our Creators

SWADOH brings to light a community of creators and designers who connect over an inspired use of the finest materials, an appreciation for uncompromising craftsmanship, and a sustainable design approach.



SWADOH PARIS · SWADOH NEW ORLEANS





# Céline Wright

## Creator

Céline Wright is a Paris-based designer who distinguishes herself with a poetic design approach resolutely rooted in nature. She is known for her handcrafted, cloud-shaped lighting creations meticulously formed in Japanese Washi paper. Inspired by organic and atmospheric forms, Wright's handmade lights evoke calm, silence, and serenity.

# Oiseau Collection

Oiseau evokes an illuminated paper bird taking flight. Available as a single fixture; impactful installed in a grouping, emulating a harmonious flock.

*Available in different sizes*

[DISCOVER](#)



*Oiseau Hanging*

SWADOH PARIS • SWADOH NEW ORLEANS



SWADDOH PARIS · SWADDOH NEW ORLEANS

Oiseau Hanging



SWADOH PARIS · SWADOH NEW ORLEANS

*Oiseau Hanging*

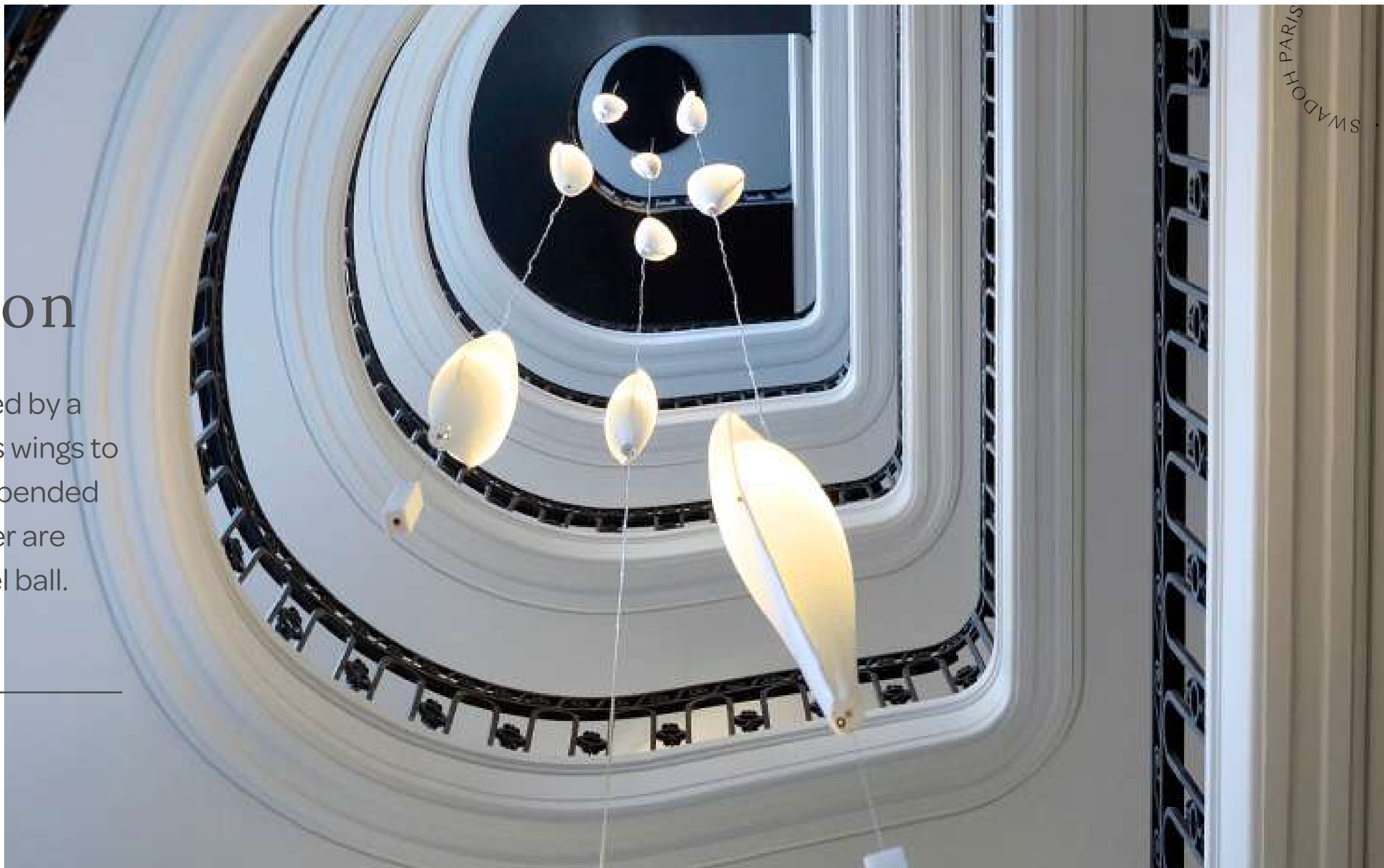


# Envol Collection

The Envol is inspired by a heron spreading its wings to take flight. The suspended folds of washi paper are stabilized by a steel ball.

---

DISCOVER



*Envol Hanging*

SWADOH PARIS · SWADOH NEW ORLEANS



*Envol Hanging*



*Envol Floor*

SWADOH PARIS · SWADOH NEW ORLEANS



*Envol detail*



*Envol Floor*

SWADDOH PARIS • SWADDOH NEW ORLEANS

# Diva Collection

Elegant and refined, Diva is handmade with Japanese washi paper and suspended from a brushed metal canopy.

*Available in different sizes to accommodate all spaces.  
Customization of the cable length is possible.*



SWADOH PARIS · SWADOH NEW ORLEANS

DISCOVER

*Diva Hanging*



*Diva Hanging*

SWADDOH PARIS · SWADDOH NEW ORLEANS · SWADDOH

SWADDOH PARIS · SWADDOH NEW ORLEANS



*Divva Mobile Hanging*



SWADDOH PARIS · SWADDOH NEW ORLEANS

*Divia Mobile Hanging*

# Cocon Collection

The grandest of the Cocon Collection by Céline Wright, Cirrus's cloud-like form is truly a statement. Use in a dining room, large entryway, or lobby.



SWADDOH PARIS · SWADDOH NEW ORLEANS

DISCOVER

Cirrus



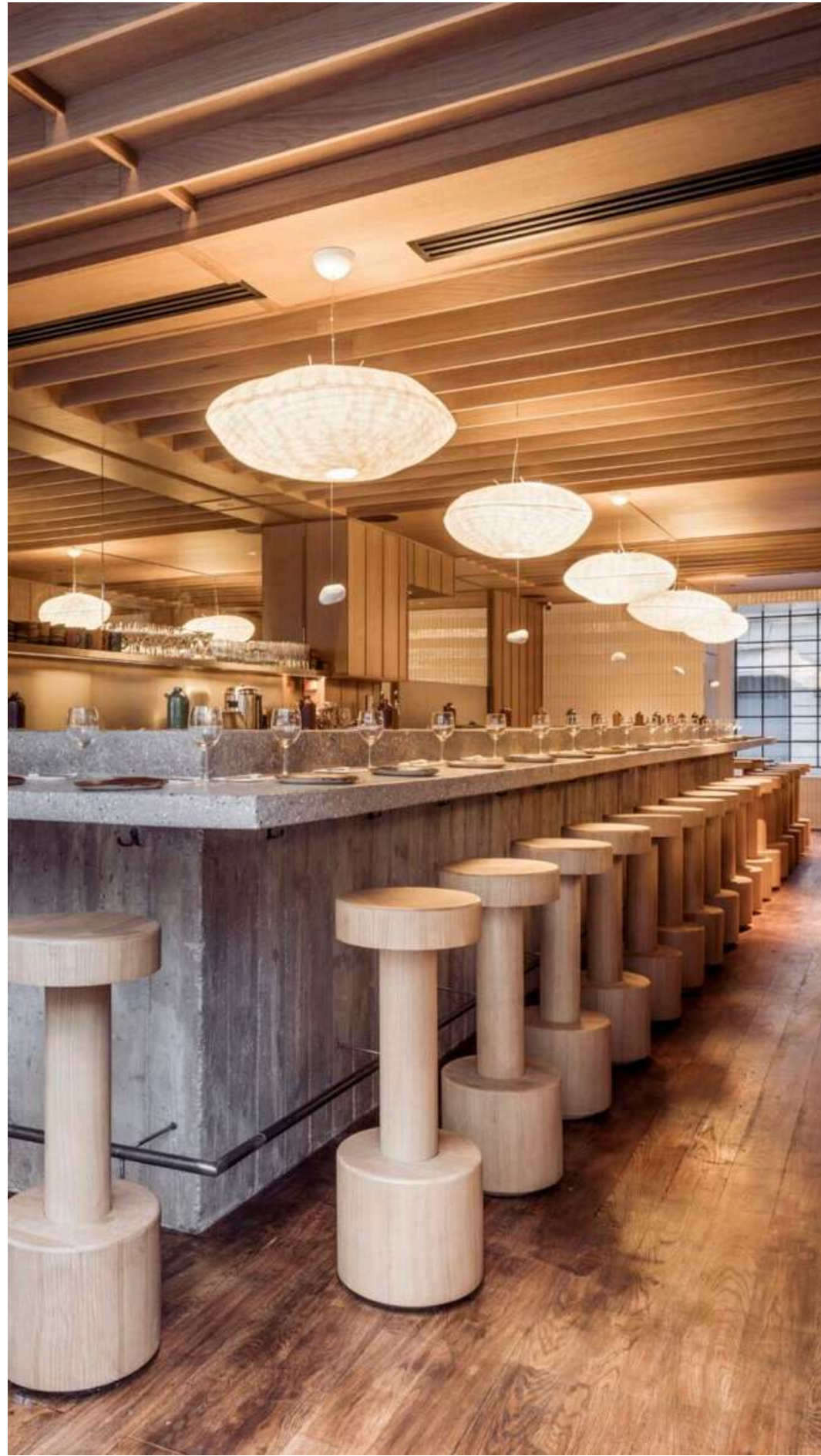


Cirrus

SWADDOH PARIS · SWADDOH NEW ORLEANS



*Nuage Hanging*



Nuage Hanging

SWADOH NEW ORLEANS  
PARIS



Nuage Hanging



*Nuage Hanging*

SWADDOH NEW ORLEANS



## Mu Studio

### Creator

Emilie Grière is a French artist and designer committed to celebrating the intrinsic qualities of soft mineral materials. Launched in 2016 by Grière in Paris, MU Studio showcases the innovative manipulation of her signature soft mineral material, Soft Stone, into lighting designs. Inspired by clay and plasterwork, the textural techniques she employs result in a distinct stamping finish on her works. All pigments are also natural and derived from minerals. The end products are soft and sculptural while making a striking visual statement.

# Albatros Collection

A sculptural fixture with draping sheets of Soft Stone in rich charcoal reveals a stamped texture on the exterior. Light, pliable and customizable.

*Albatros are available in different sizes, hard-wired or soft-wired, and as a single pendant or as a grouping.*

---

DISCOVER

Albatros Hematite

SWADOH PARIS · SWADOH NEW ORLEANS





SWADOH PARIS · SWADOH NEW ORLEANS ·

*Albatros Quartz Hanging*



# Albatros Pendant



Albatros Carrara



Albatros Golzinne



Albatros Estremoz



Albatros Quartz



Albatros Hematite

# Albatros Wall Sconce

SWADOH PARIS · SWADOH NEW ORLEANS



Albatros Carrara



Albatros Golzinne



Albatros Estremoz



Albatros Quartz



Albatros Hematite

# Albatros Finish - MU Studio



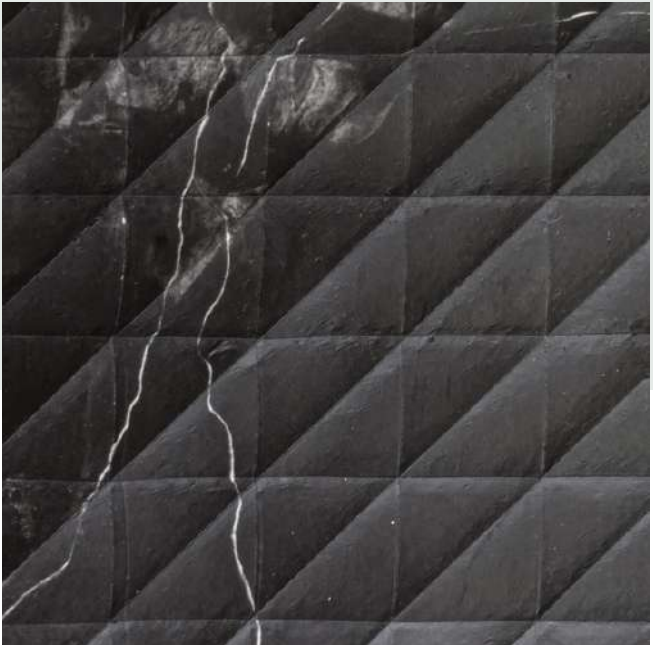
*Estremoz*



*Carrara*



*Quartz*



*Golzinne*



*Hematite*



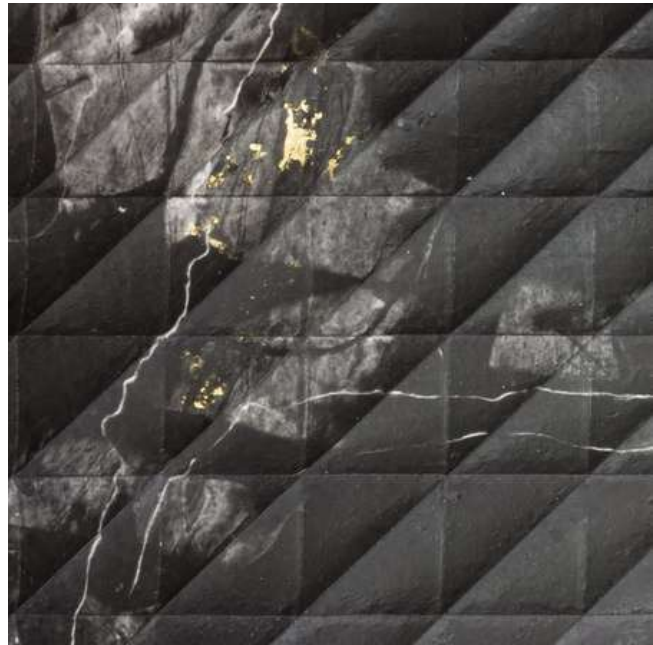
*Estremoz Gold Flecks*



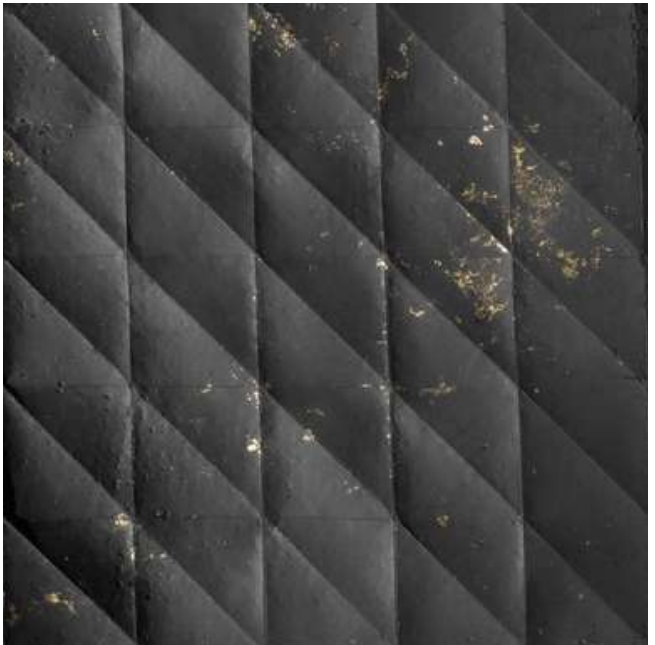
*Carrara Gold Flecks*



*Quartz Gold Flecks*



*Golzinne Gold Flecks*



*Hematite Gold Flecks*

# Fungia Collection

The layering of delicately thin Soft Stone by MU Studio comes alive when impacted by even a slight breeze. Inspired by stellar hues, the finish showcases swirls of natural pigmentation and gold leaf.

*Available in four sizes, hard-wired or soft-wired, and as a single pendant or as a grouping.*

---

DISCOVER



*Fungia Jupiter*

SWADDOH PARIS • SWADDOH NEW ORLEANS



*Fungia Hanging*



*Fungia Eclipse*



*Fungia Stem Mount*



Fungia Eclipse



Fungia Uranus



Fungia Neptune



Fungia Moon



Fungia Jupiter

# Fungia Finish - MU Studio



Neptune



Jupiter



Uranus



Eclipse



Moon



## Crosland + Emmons

### Creator

Each Crosland + Emmons fixture begins with single pieces mimicking the shapes of nature and the imperfect beauty of life. To Dana Castle, lighting is the completion point of a space. It is part of the canvas of a room. Her designs are intentionally off balance and should be adjusted according to spatial needs, allowing it only to find an identity and purpose when it is finally home. The journey ends when these sculptural pieces are where they belong.



# Genesis Collection

The foundational collection that started it all. Genesis showcases Castle's foray into product design with a celebration of the relationship between clay and form.

---

DISCOVER



SWADDOH PARIS • SWADDOH NEW ORLEANS

*Coil Pendant*



*Grapes Multilight*



*Drift Pendant*



*Towering Pendant*

# Jardin Collection

Castle's newest collection, Jardin continues to take form as she pushes the limitations of clay. Playful silhouettes spark delicate whimsy in a variety of flushmounts, sconces and pendants.

---

[DISCOVER](#)



SWADOH PARIS · SWADOH NEW ORLEANS

*Pompon Ceiling Flushmount*



*Chrysalis Pendant*





*Sky of Lilies Pendant*



*Lily Wall Sconce*

SWADOH PARIS · SWADOH NEW ORLEANS



# Morgane Baroghel-Crucq

## Creator

Morgane Baroghel-Crucq is a French fiber artist. In 2019, she joined the Académie des Savoir Faire, a Fondation d'Entreprise Hermès program, positioning her as a pioneer among French fiber artists to share her innovative vision. Baroghel-Crucq collaborates with SWADDOH on the creation of exclusive lighting fixtures, offering her luminous and languid textile designs for a one-of-a-kind collection.

# Selene Collection

At its core, the Selene Collection showcases Morgane Baroghel-Crucq's unique metallic fabric. With its mesmerizing qualities, this fabric elegantly embodies the concept of light and reflection.

*A collection in collaboration between  
Morgane Baroghel-Crucq & SWADOH*

---

[DISCOVER](#)



SWADOH PARIS · SWADOH NEW ORLEANS

*Diva Hanging*



# Selene Collection



Selene Flushmount



Selene Pendant



Selene Wall Sconce



Selene Single Branch

# Art

*Morgane Baroghel-Crucq*

---



# Art

Baroghel-Crucq's artistic process is a thoughtful reflection on experimentation. She uses traditional textile weaving techniques with unexpected materials in order to create a unique and truly bespoke product. Her inspiration is drawn from her ideal for beauty: the aesthetic of light and reflection.

---



SWADOH PARIS • SWADOH NEW ORLEANS

*Dawning Soil*



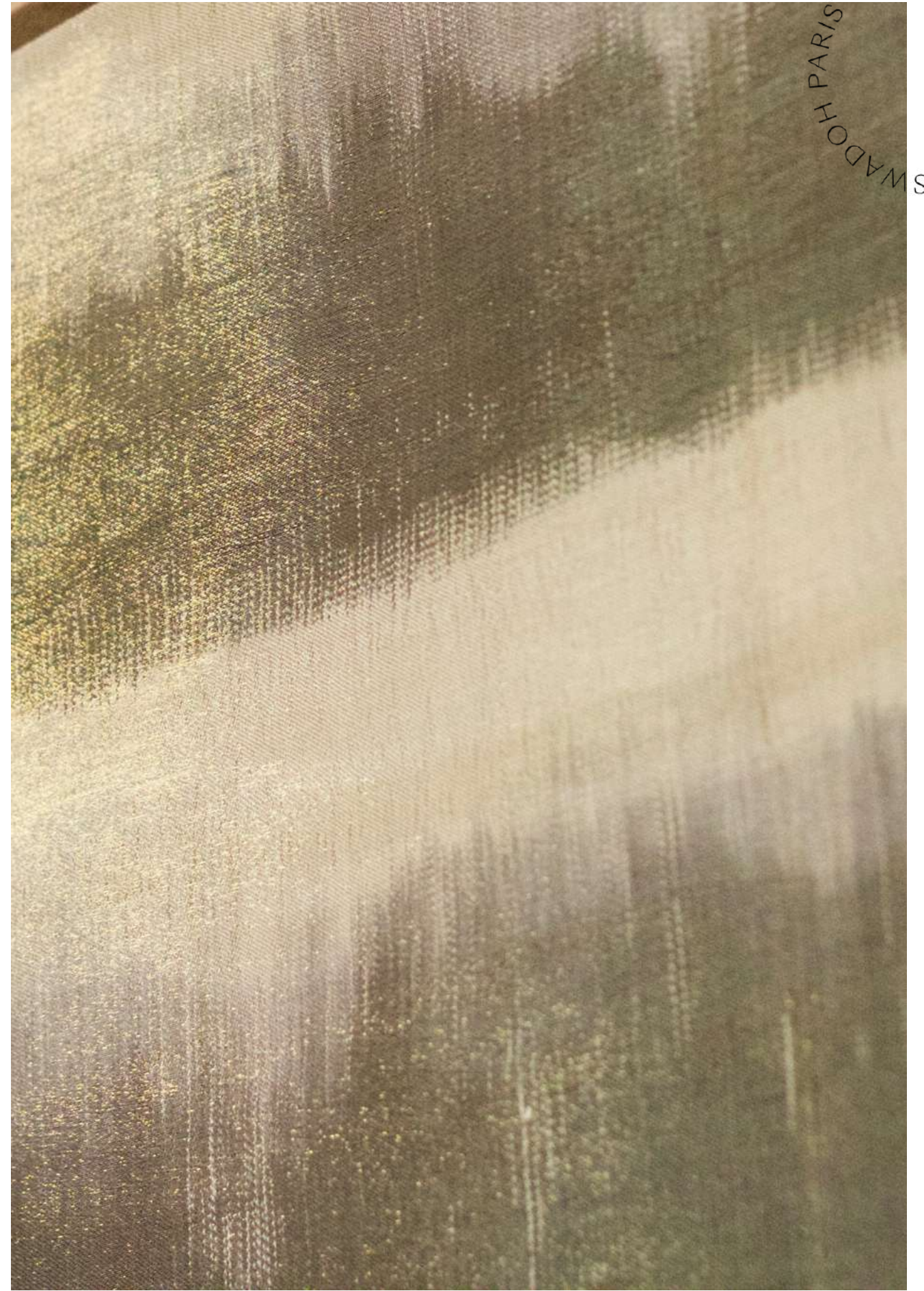
*Blue of Distance*



*Defrosting Dunes*



*Sand*



*SAND — silk, brass*

SWADOH PARIS · SWADOH NEW ORLEANS

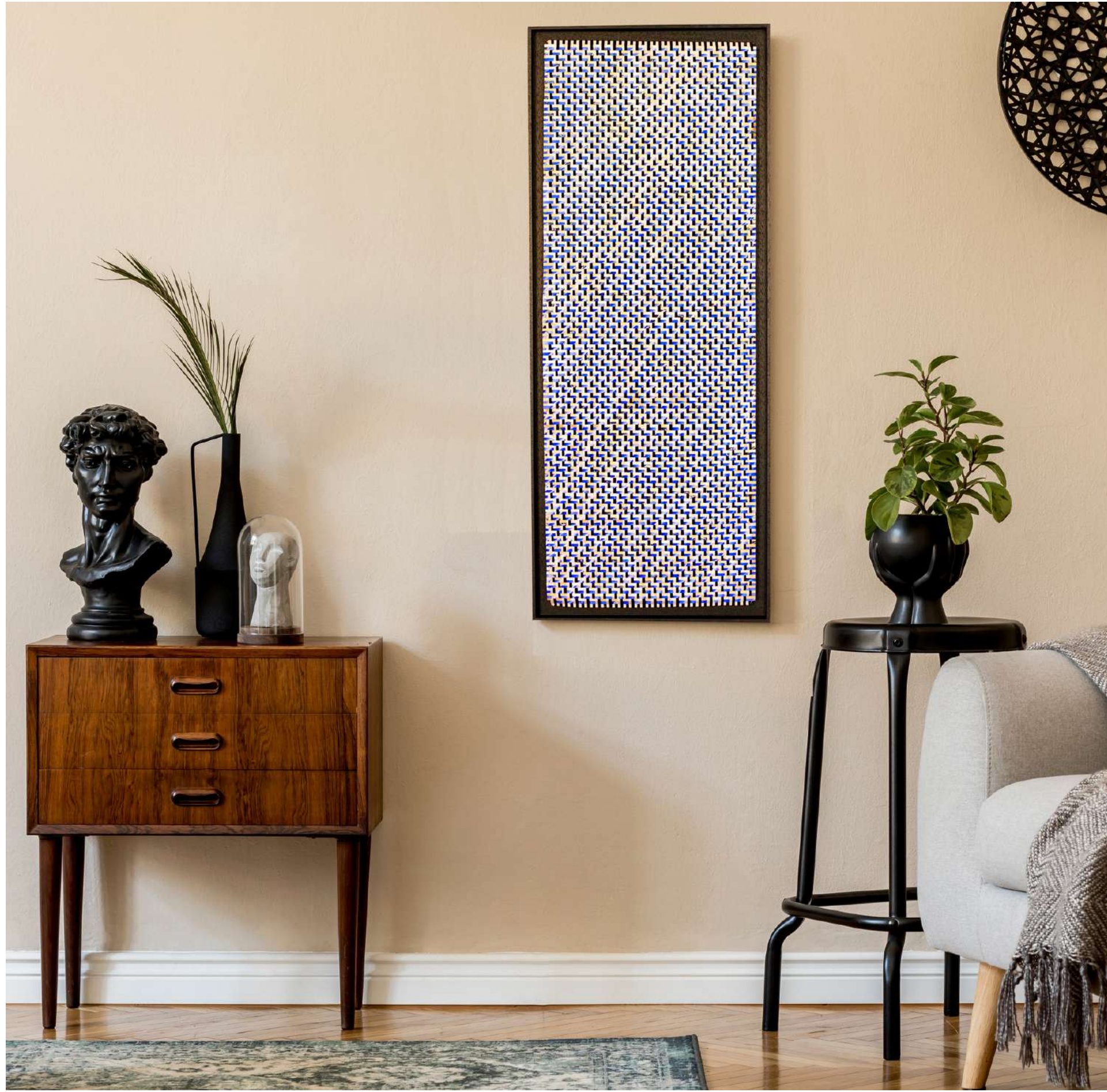


*Strates in Aqua*



*STRATES, AQUA – linen, paper*

SWADDOH PARIS · SWADDOH NEW ORLEANS



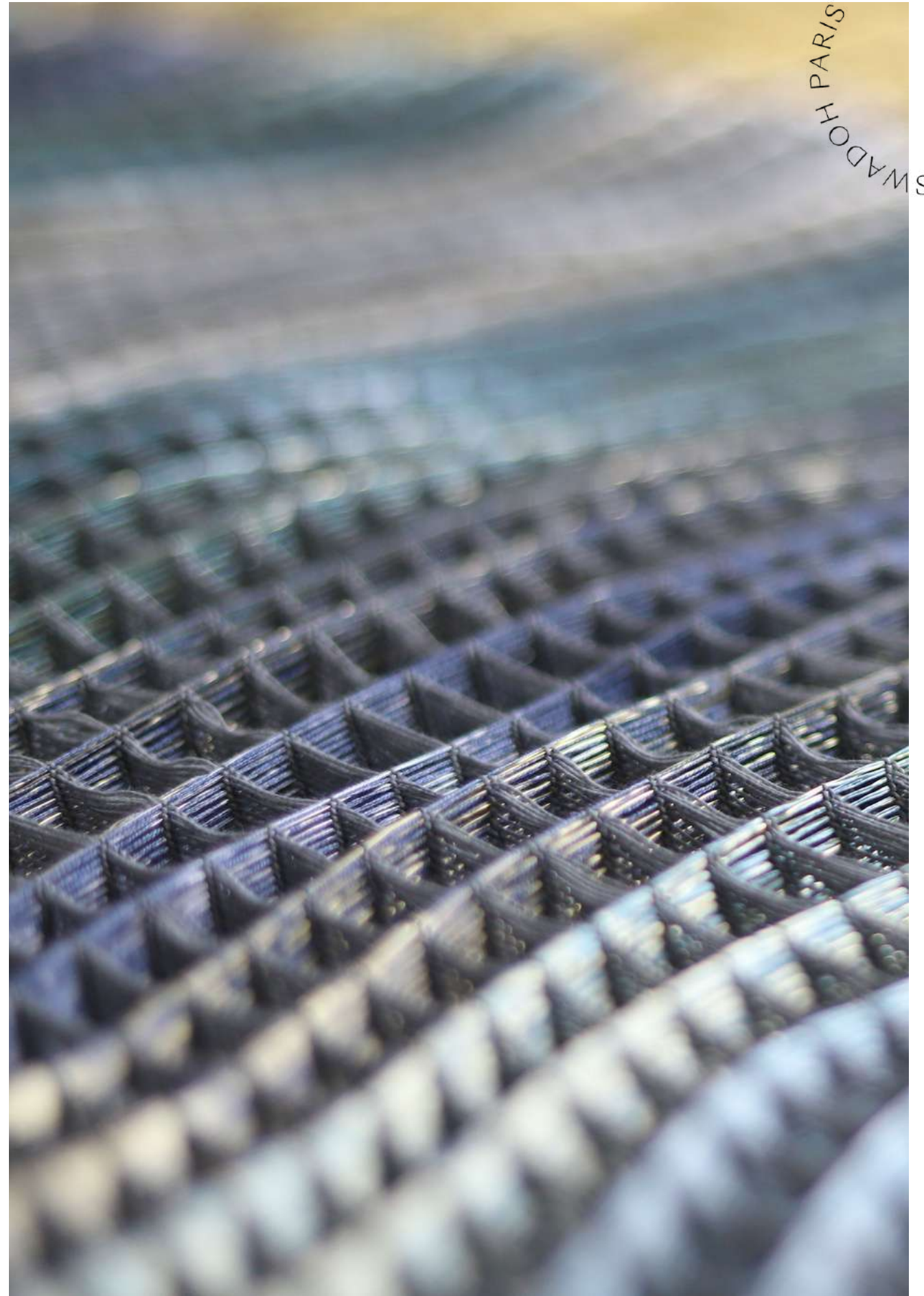
*Magma Lapis*



*MAGMA, LAPIS – silk, paper*



*Alveoles Nacrees I*



ALVÉOLES NACRÉES – Silk, linen, copper, brass

SWADOH PARIS • SWADOH NEW ORLEANS





*Chasma*



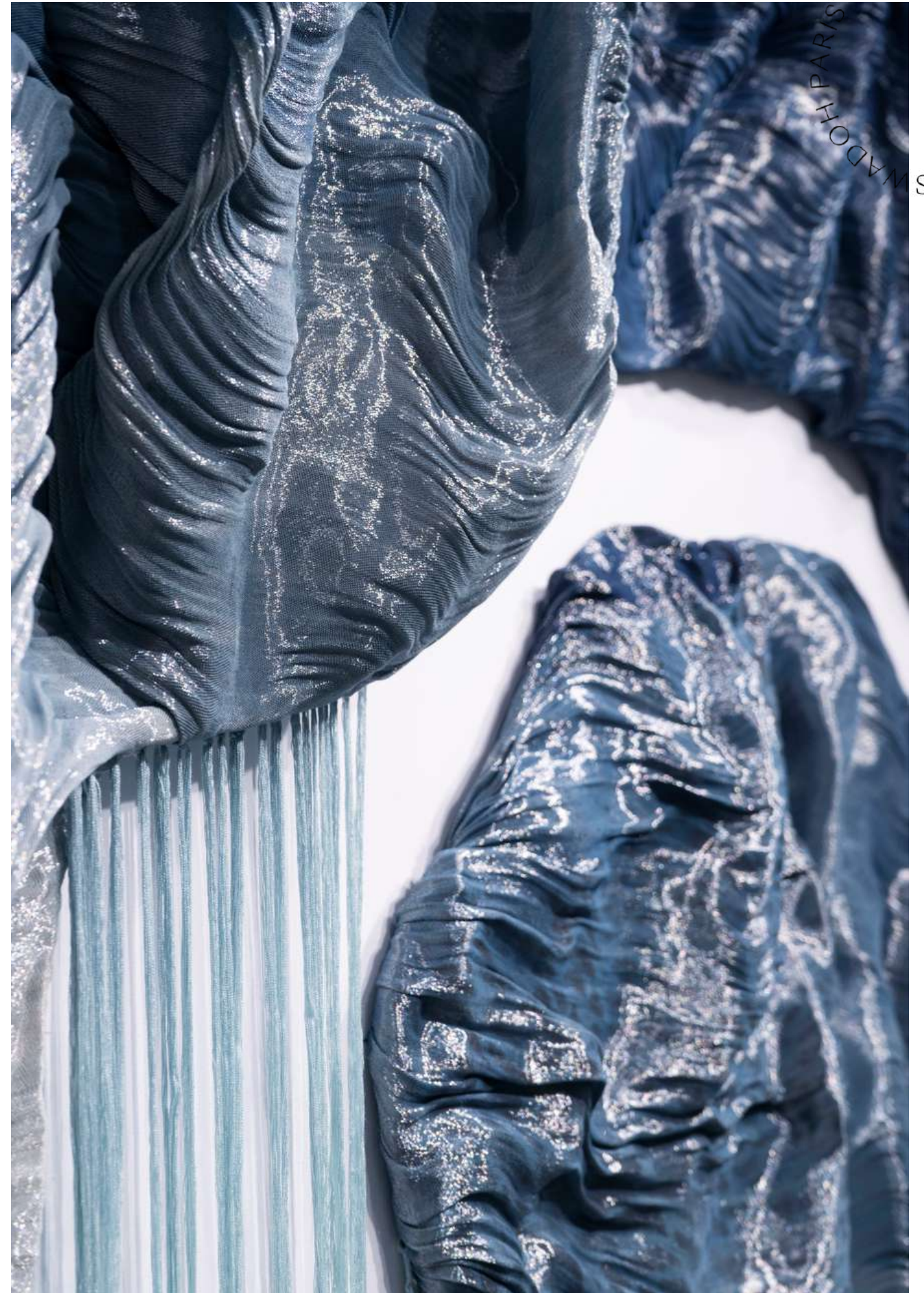
*ASTER, BLUE – silk, brass*

SWADOH PARIS • SWADOH NEW ORLEANS

Morgane Baroghel-Crucq



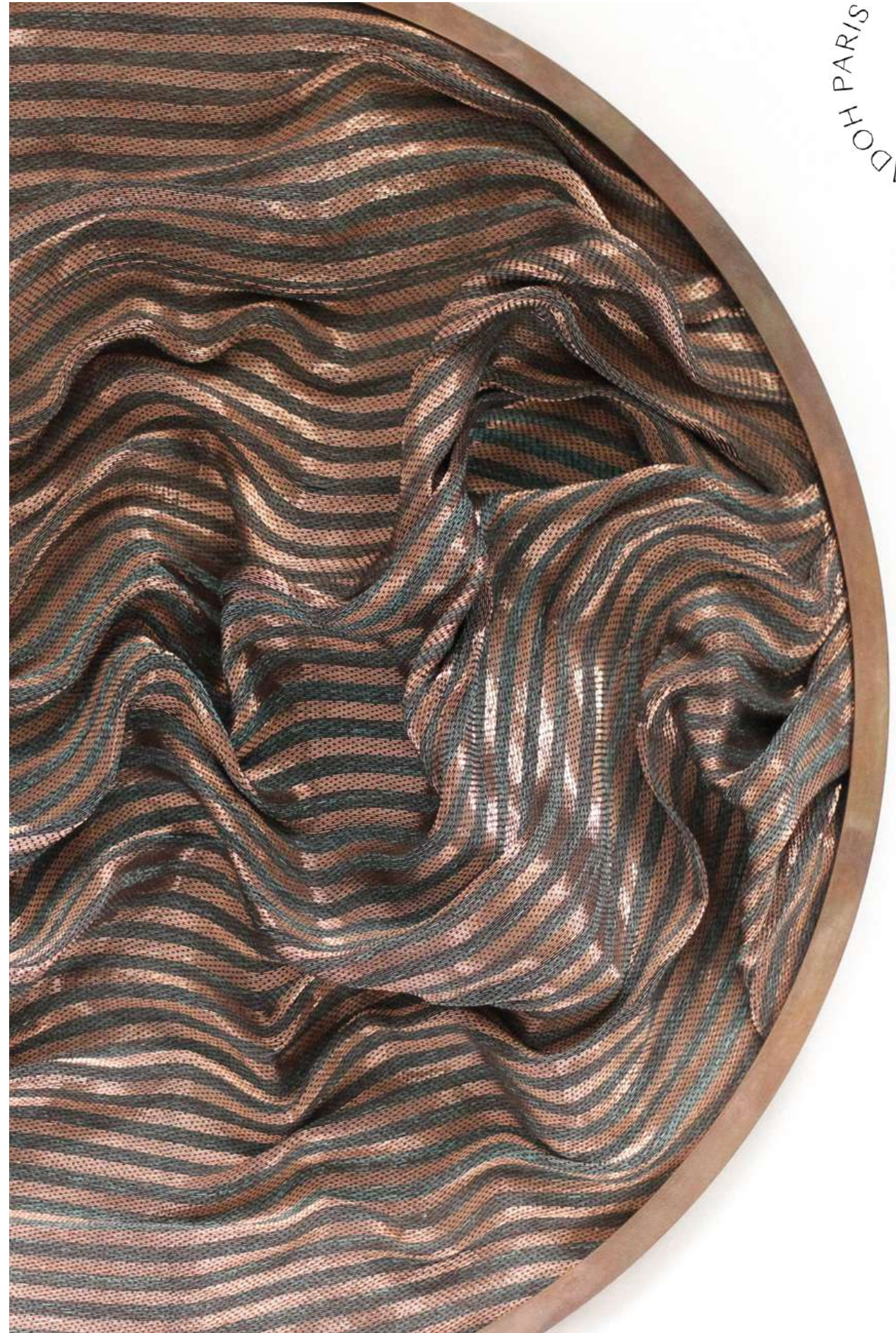
*Brûler la pluie*



SWADOH NEW ORLEANS  
SWADOH PARIS



*Clinamen 4*



SWADOH PARIS • SWADOH NEW ORLEANS



Discover More Art

on [SWADOH.COM](http://SWADOH.COM)

# Materials Catalog

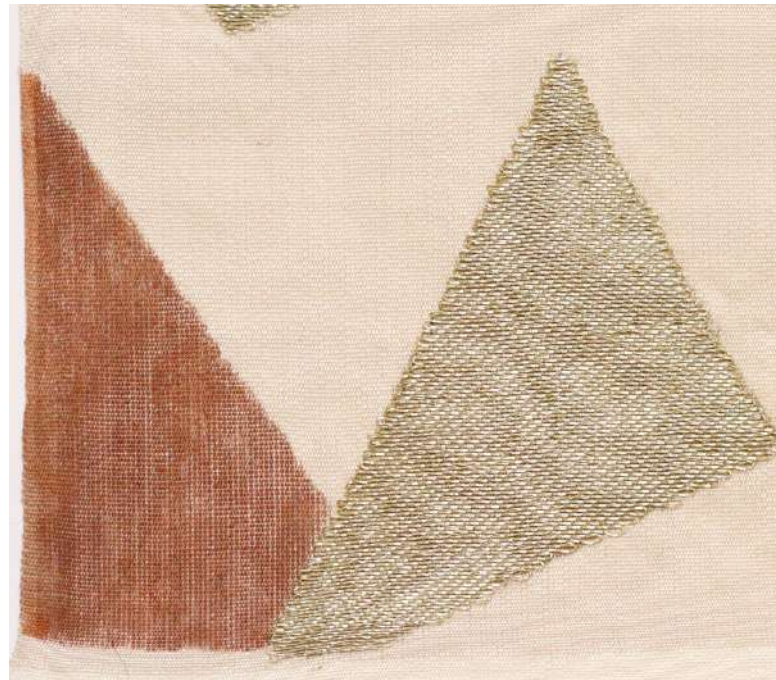
*Morgane Baroghel-Crucq*

---

# Amazonie Collection

---

SWADDOH PARIS • SWADDOH NEW ORLEANS



BOBAJI, TERRA – silk, metallic thread



PYRITE, GREEN – silk, linen, metallic thread



RIVER – silk, linen, metallic thread



EROSION – silk, brass

# Ariadne Collection

---



ALÉATOIRE, CAMEL – metal, linen, nylon



ALVÉOLES NACRÉES – Silk, linen, copper, brass



HORIZONS, NEUTRAL – brass, linen



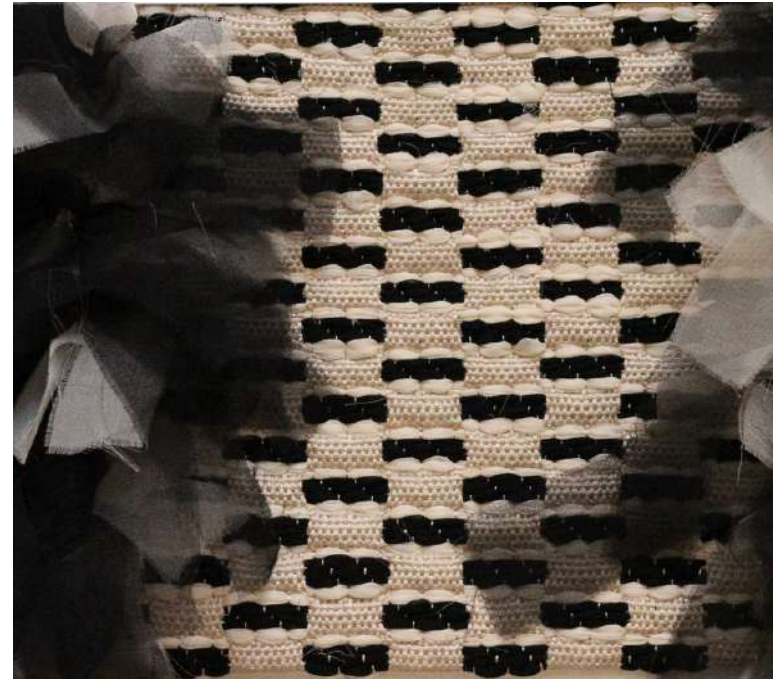
PAÉSINE – silk, linen, metallic thread

# Java Collection

---



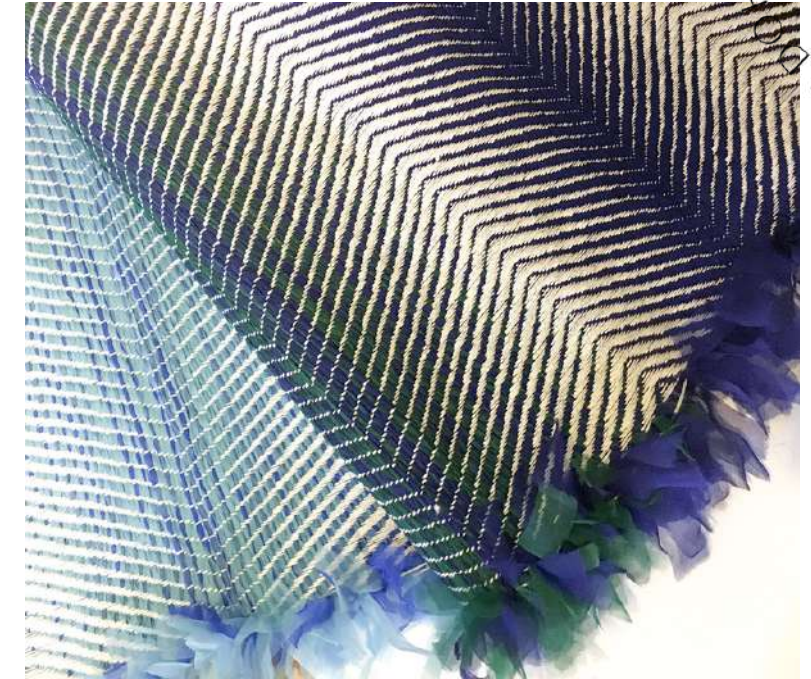
DITHA, TERRA – silk



KOLO, BLACK – silk



SELENE, WHITE – silk, linen

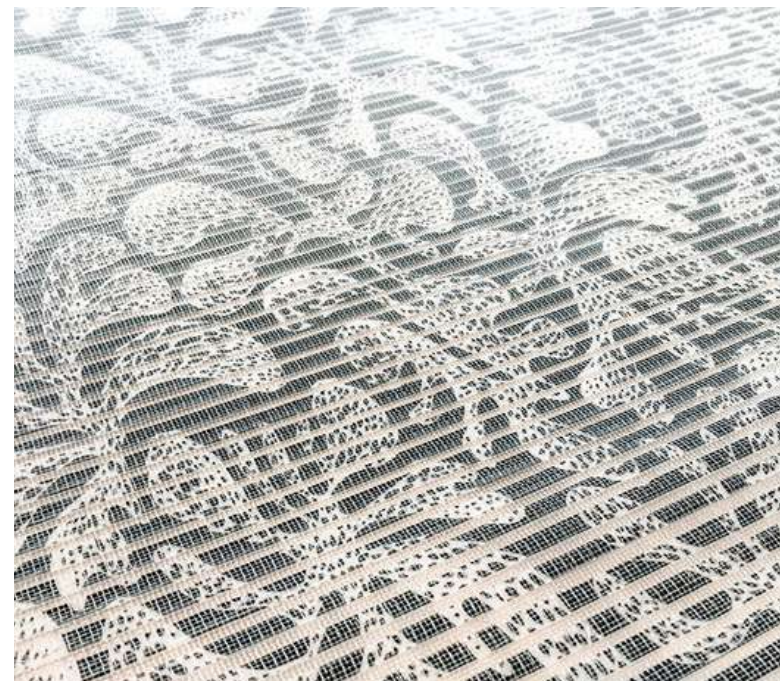


NUIT – silk, linen

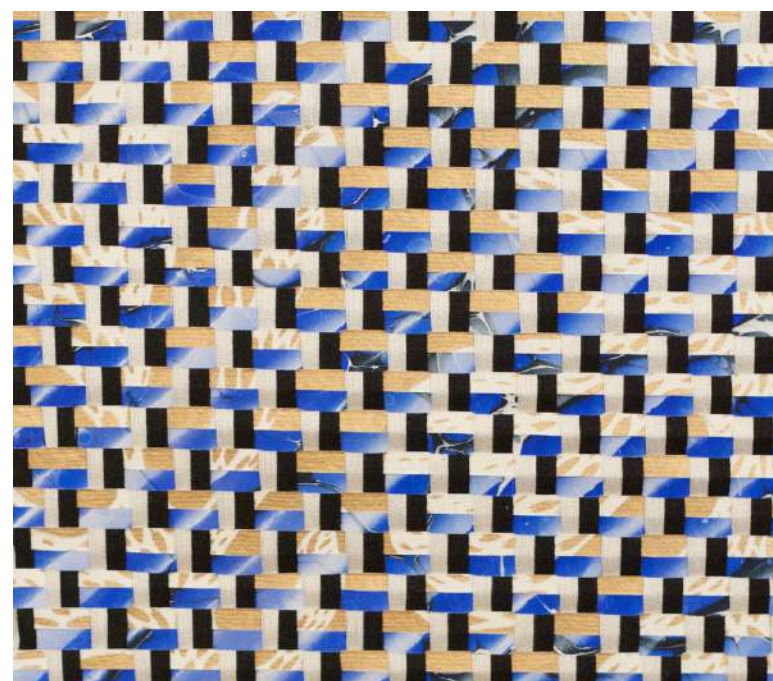
PARIS • SWADDOH NEW ORLEANS  
SWADDOH SWAMS

# Papier Collection

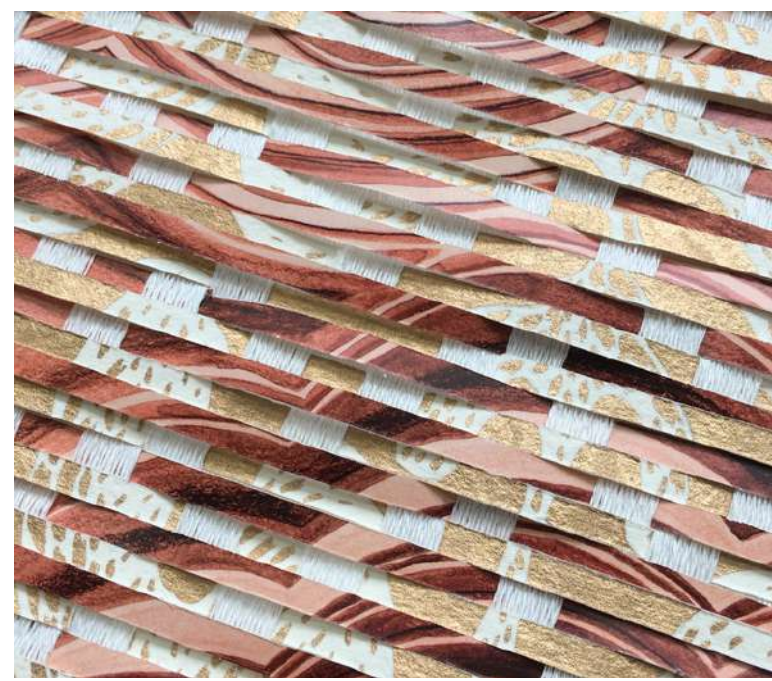
---



ARBORESCENCE – paper, nylon



MAGMA, LAPIS – silk, paper



STRATES, JASPE – linen, paper



PAYSAGE EN MOUVEMENT – paper, nylon

# Reflexion Collection

---

SWADOH PARIS • SWADOH NEW ORLEANS



ARGENT, WHITE – silk, stainless steel



ASTER, BLUE – silk, brass



CUIVRE, BLACK – silk, copper



SAND – silk, brass



ASTER, DARK – silk, brass



ARGENT, BLACK – silk, stainless steel



DORÉS, BLACK – silk, brass



DISCOVER  
MORE MATERIALS  
[SWADOH.COM](http://SWADOH.COM)



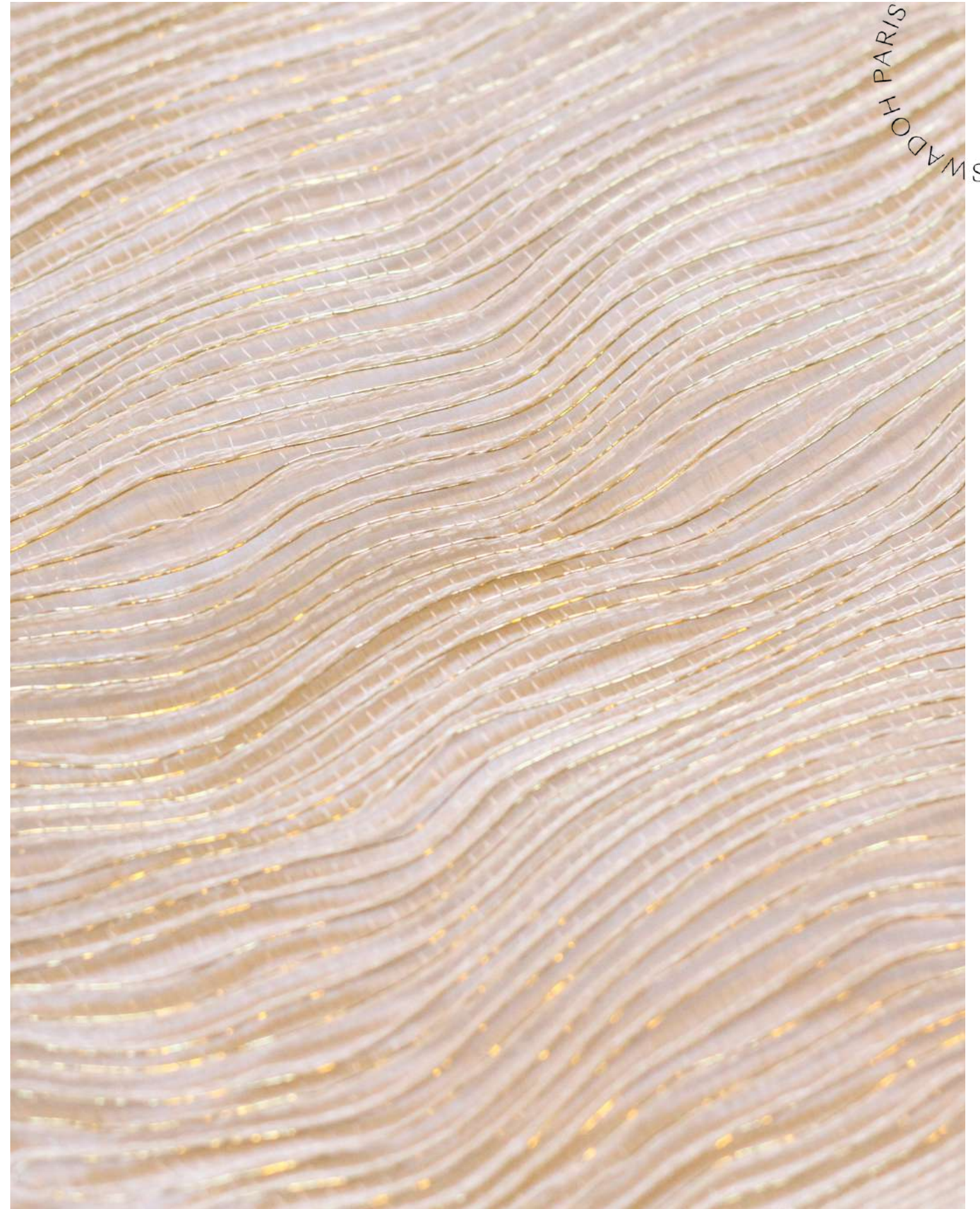
# Materials Application

*Morgane Baroghel-Crucq*

---

# Room Divider



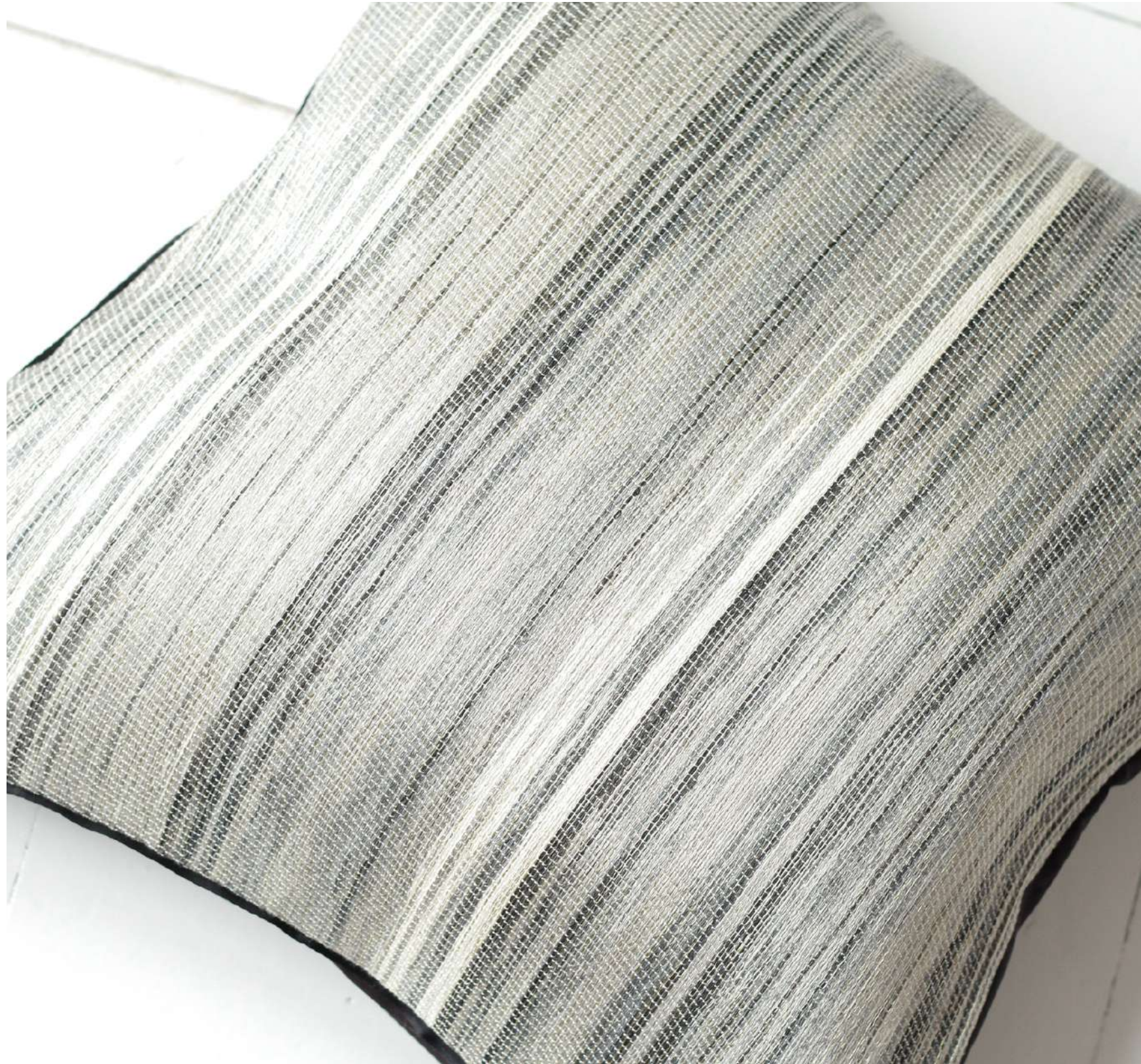


SWADDOH PARIS • SWADDOH NEW ORLEANS

ALÉATOIRE, WHITE – metal, linen, nylon

# Pillow Case

---



SWADDOH PARIS · SWADDOH NEW ORLEANS ·

PAÉSINE – silk, linen, metallic thread



SWADDOH PARIS · SWADDOH NEW ORLEANS ·

EROSION — silk, brass

A dimly lit, modern living room with a sofa, coffee table, and bookshelf. The room is furnished with a dark sofa, a light-colored coffee table, and a large bookshelf. There are potted plants and a patterned rug on the floor. The overall atmosphere is cozy and contemporary.

# CONTACT US

---

@ swadoh

swadoh.com